

ULTRASONIC PROBE

UM-S20-20R

An Ultra-Slim Ultrasonic Probe Facilitates Ultrasound Examination
into Tight Strictures of Pancreatobiliary Ducts



UM-S20-20R

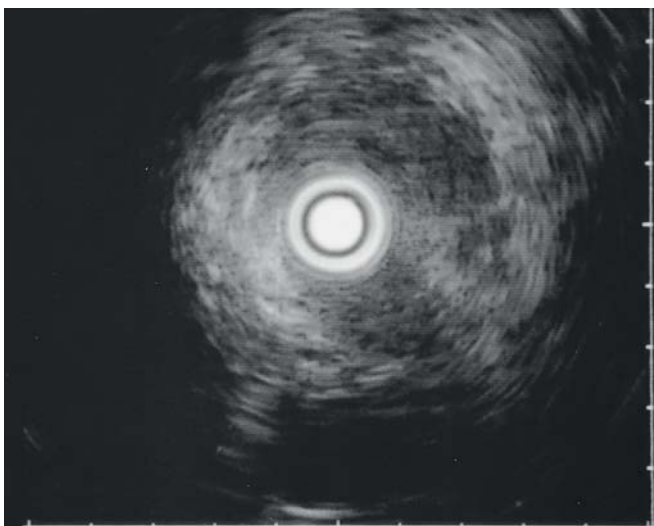
Expanding Endoscopic Ultrasonography — Introducing the UM-S20-20R, an Extra-Slim 1.7 mm Ultrasonic Probe that fits through a 2.2 mm Diameter Channel of a Standard Endoscope



Transpapillary insertion of UM-S20-20R without EST



Ultrasound examination



Biliary cancer

Specifications

Display Mode	B-Mode
Scanning Method	Mechanical, Radial scanning
Scanning Direction	Perpendicular to the direction of insertion, 360° scanning
Frequency	20 MHz
Contact Method	De-aerated water immersion method / Direct contact method
Working Length	2050 mm
Total Length	2140 mm
Insertion Tube Outer Diameter	1.7 mm (Distal end side 850 mm) 2.0 mm (Proximal side)
Insertion Tube Max. Outer Diameter	2.0 mm
Channel Inner Diameter	2.0 mm CH scopes with working length less than 600 mm 2.2 mm or more except for L-length colonoscope

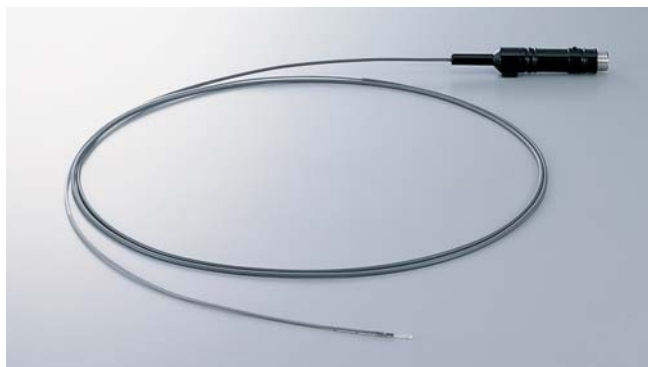
As more physicians become experienced with the diagnostic capabilities of endoscopic ultrasonography, the demand is rising for new tools to expand the applicability of this powerful new procedure. OLYMPUS has developed an ultra-slim ultrasonic probe that expands the benefits of ultrasonography into narrow lumens. Measuring only 1.7 mm across at the distal end, the UM-S20-20R Ultrasonic Probe can be easily inserted through a standard endoscope with a 2.2 mm diameter channel*, making it ideal for insertion into narrow passages such as the pancreatobiliary ducts.

Features

- 1) Slim design is particularly effective for insertion into the pancreatobiliary ducts.
- 2) Distal end diameter of 1.7 mm and maximum insertion tube diameter of 2.0 mm allows use with applicable endoscope channel diameters of 2.2 mm or more* (except in the case of colonoscopes with L working length).
- 3) 20 MHz offers detailed, high-resolution ultrasonography.
- 4) Ultrasound images easily obtained during routine examinations when combined with the EU-M30 or EU-M20 Endoscopic Ultrasound Center.



* The UM-S20-20R can also be inserted into the OLYMPUS CHF-P20Q Cholangiofiberscope with a 2.0 mm diameter channel.



Specifications, design and accessories are subject to change without any notice or obligation on the part of the manufacturer.



OLYMPUS MEDICAL SYSTEMS CORP.
Shinjuku Monolith, 2-3-1 Nishi-Shinjuku, Shinjuku-ku, Tokyo 163-0914, Japan

For a complete listing of sales and distribution locations visit:
www.olympus.com