

OLYMPUS®

Your Vision, Our Future

RHINO-LARYNGO VIDEOSCOPE
ENF-VH2/ENF-V4
New Design Optimized for ENT Examinations



The Future Standard for ENT

ENF-VH2/ENF-V4

Featuring the new “Pistol grip”, an ergonomic control section specially designed for otolaryngological examinations, the ENF-VH2/V4 brings physicians the same high image quality and thin diameter offered by conventional OLYMPUS products. With its reduced weight, improved operability, and easier insertion, this new grip minimizes strain and maximizes performance.

Easier single-hand control

The lever and switches are laid out to facilitate the operations with a single hand. The new control section is designed to be handled with either the left or right hand without any discomfort.



New design optimized for ENT examinations

The Pistol grip provides a secure and stable grip, allowing the control section to be held more comfortably

Operating the scope by holding the control section positions the insertion tube more linearly in relation to the patient, reducing friction between the scope and the mucosa, thereby facilitating smoother and more efficient insertion than conventionally possible. Remote switches have been re-positioned, further improving operability.



Control section with 30%* reduced weight

In addition to reducing the overall size of the control section as well as the diameter of the universal cable, we have reduced the weight of the control section by 30% compared to conventional OLYMPUS models.

* Based on Olympus survey results.

The Future Standard for ENT

ENF-VH2/ENF-V4

Featuring the new “Pistol grip”, an ergonomic control section specially designed for otolaryngological examinations, the ENF-VH2/V4 brings physicians the same high image quality and thin diameter offered by conventional OLYMPUS products. With its reduced weight, improved operability, and easier insertion, this new grip minimizes strain and maximizes performance.

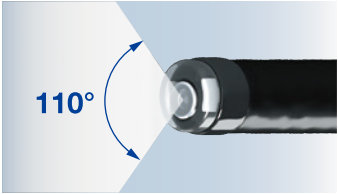
Easier single-hand control

The lever and switches are laid out to facilitate the operations with a single hand. The new control section is designed to be handled with either the left or right hand without any discomfort.

Proprietary OLYMPUS technology improves exam capabilities and simplifies operation

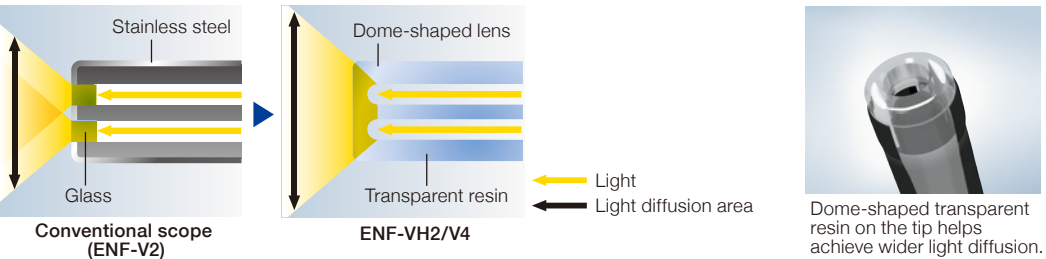
Wide field of view

The ENF-VH2 has a viewing angle of 110°. And with HD resolution and exceptional illumination, every corner of the field can be thoroughly inspected.



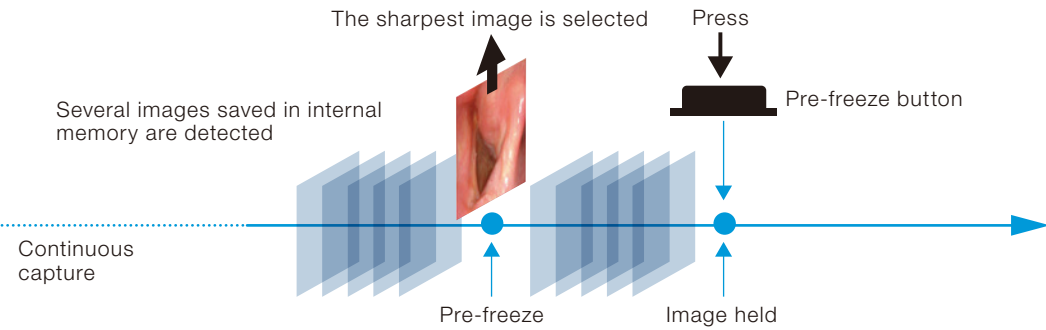
Exceptional luminosity

Although it has a small diameter, the scope still illuminates a broad area, providing a detailed image of any lesions within the field of view. This exceptional luminosity is especially useful when observing with NBI.



Pre-freeze Function

The scope continuously captures still images even before you push the Pre-freeze button. When you press the button, the system automatically selects the sharpest image among several images.



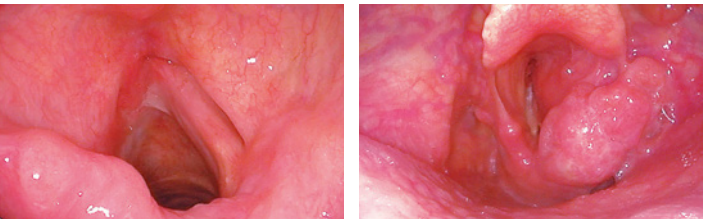
Rhino-laryngo videoscope

ENF-VH2 - HD type -

Astounding Image Quality

HD

With advances in CCD technology, ENF-VH2 delivers HD images, which show even greater detail for examinations.



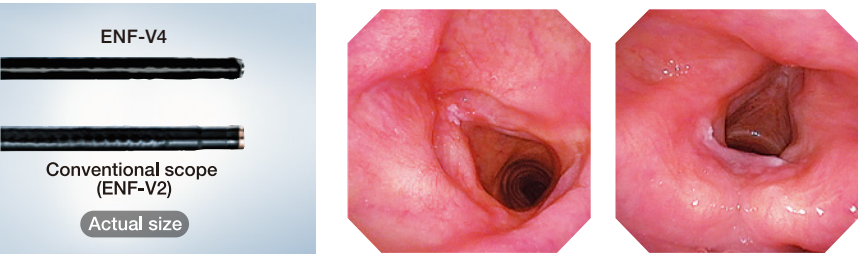
Rhino-laryngo videoscope

ENF-V4 - Slim diameter type -

Surprisingly Slim Diameter

ø 2.6 mm

The distal end of the ENF-V4 scope is only 2.6 mm in diameter. Also, the difference between diameters of the distal end and the insertion tube is minimal. This makes insertion into tight nasal passages much easier. Even with its slim diameter design, the ENF-V4 delivers the same exceptional image quality as conventional models.

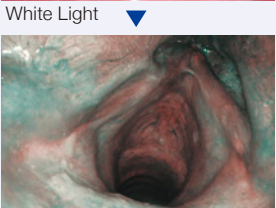


Narrow Band Imaging

NBI

During endoscopic observation, NBI enhances visualization of the capillary network and mucosal morphology.

Olympus Narrow Band Imaging (NBI) is an optical technology available for a variety of medical disciplines which helps to visualize the most minute vascular and mucosal patterns. NBI uses only wavelengths absorbed by hemoglobin for maximum contrast. A number of studies highlight the clinical value of NBI, especially with regard to the detection of cancer and characterization of suspicious mucosal areas. Compared to white-light endoscopy, the images of capillaries are less blurred and the probability of missing a lesion is reduced.



Specifications

Model		ENF-VH2	ENF-V4
Optical system	Field of view	110°	90°
	Direction of view	0° (Forward viewing)	
	Depth of field	5 – 50 mm	3.5 – 50 mm
Insertion section	Distal end outer diameter	ø 3.9 mm	ø 2.6 mm
	Insertion tube outer diameter	ø 3.6 mm	ø 2.9 mm
	Insertion section working length	300 mm	300 mm
Bending section	Angulation range	UP 130° / DOWN 130°	
Total length		500 mm	
NBI observation mode		Available	
Laser treatment		Available	Not available

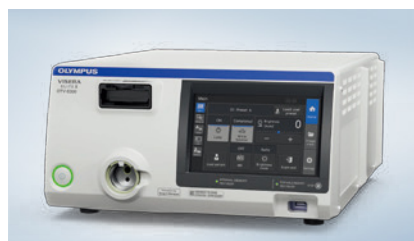


RHINO-LARYNGO VIDEOSCOPE OLYMPUS ENF-VH2



RHINO-LARYNGO VIDEOSCOPE OLYMPUS ENF-V4

Compatible Video Processor



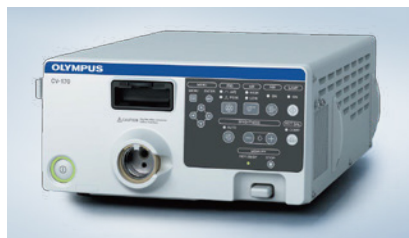
VISERA ELITE II VIDEO SYSTEM CENTER
OTV-S300/OTV-S200



EVIS EXERA III VIDEO SYSTEM CENTER
CV-190

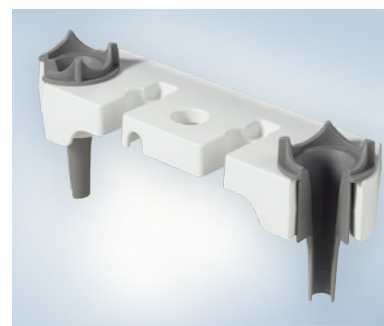


VISERA ELITE VIDEO SYSTEM CENTER
OTV-S190



VIDEO SYSTEM CENTER
CV-170

Accessory Lineup



ENT SCOPE HANGER*
MAJ-2145

* Attaches to Olympus Compact Trolleys and Mobile Workstations

Specifications, design and accessories are subject to change without any notice or obligation on the part of the manufacturer.