

EVIS LUCERA ULTRASONIC BRONCHOFIBERVIDEOSCOPE

# BF-UC260FW

EBUS-TBNA Setting a New Standard for Diagnosis and Staging in the Lung



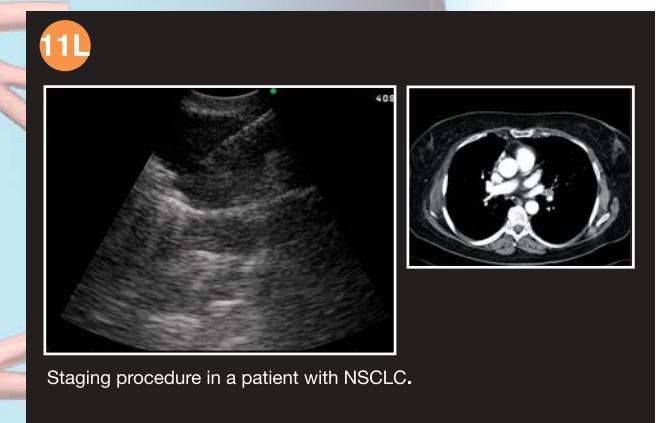
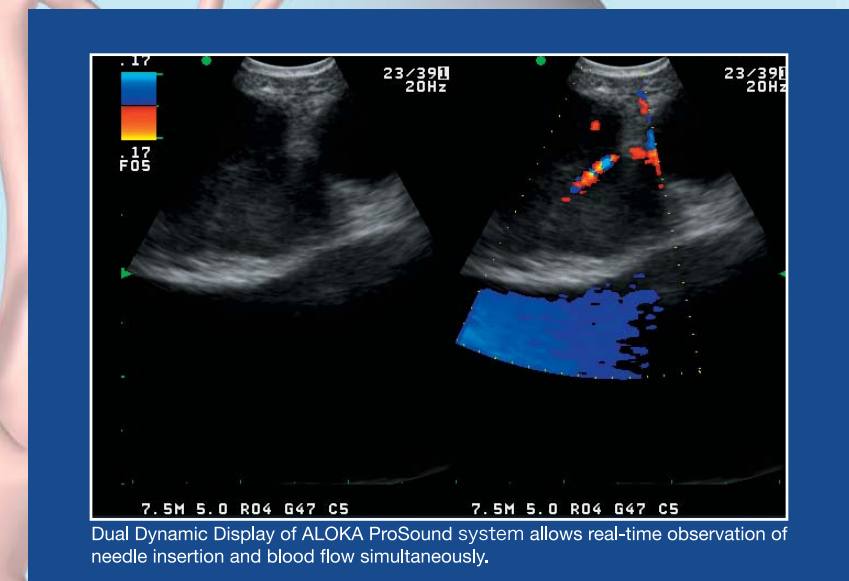
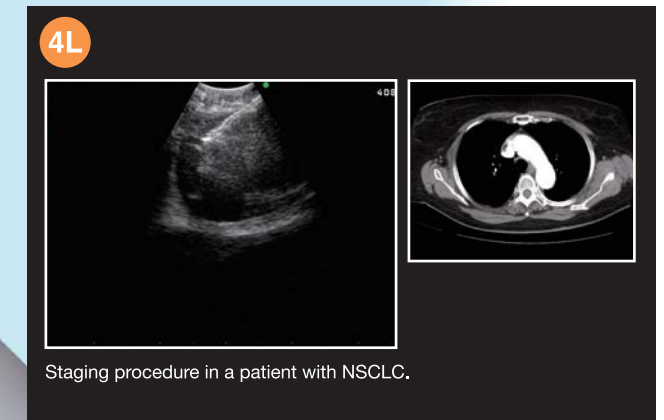
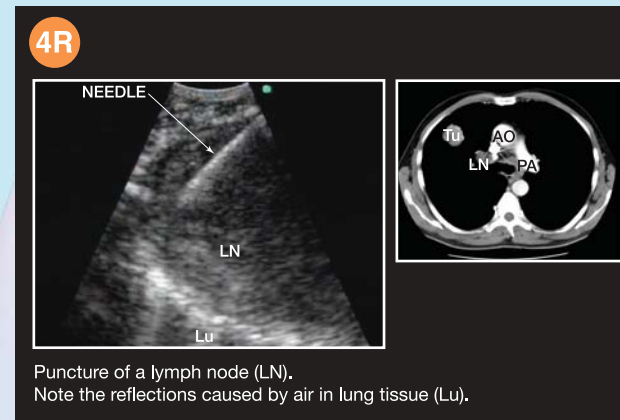
# *Innovative scope design helps you take advantage of superior ultrasound imaging for EBUS-TBNA.*

Compatible with OLYMPUS' popular EU-ME1 compact endoscopic ultrasound centre as well as ALOKA's industry-leading ProSound  $\alpha$ 10, this new EBUS-TBNA system makes biopsies safer and more accurate than conventional blind TBNA, and offers an alternative to mediastinoscopy.

The BF-UC260FW clearly visualizes the dedicated echogenic aspiration needle via ultrasound imaging.

With the introduction of this versatile EBUS-TBNA system, OLYMPUS is making an important contribution to improved staging and diagnosis of lung cancer.

## Clinical cases





# *Innovative scope design helps you take advantage of superior ultrasound imaging for EBUS-TBNA.*

Compatible with OLYMPUS' popular EU-ME1 compact endoscopic ultrasound centre as well as ALOKA's industry-leading ProSound  $\alpha$ 10, this new EBUS-TBNA system makes biopsies safer and more accurate than conventional blind TBNA, and offers an alternative to mediastinoscopy.

The BF-UC260FW clearly visualizes the dedicated echogenic aspiration needle via ultrasound imaging.

With the introduction of this versatile EBUS-TBNA system, OLYMPUS is making an important contribution to improved staging and diagnosis of lung cancer.

## Wide 2.2 mm diameter channel and innovative detachable ultrasound cable

### Features

- Channel diameter enlarged to 2.2 mm for improved suction capability and device insertion.
- Detachable ultrasonic cable design allows connection with the ALOKA ProSound  $\alpha$ 10, and OLYMPUS EU-ME1 or EU-C2000.
- Wider ultrasound scanning and higher resolution ultrasound image, plus higher sensitivity Doppler function available with ProSound  $\alpha$ 10 and EU-ME1.
- Detachable ultrasonic cable simplifies reprocessing and facilitates easier placement into an automatic endoscope reprocessor.
- Innovative "hybrid" design combines video and fiberoptic technologies in a single scope, offering the same functionality as videoscopes yet with a slim insertion tube diameter of only 6.2 mm\*, even with an incorporated ultrasound transducer.

\*Distal tip diameter measures 6.9 mm.

EVIS LUCERA ULTRASONIC BRONCHOFIBERVIDEOSCOPE

# BF-UC260FW

HYBRID  
SCOPE

## A choice of high-performance ultrasound processors



ALOKA DIAGNOSTIC  
ULTRASOUND SYSTEM  
**ProSound  $\alpha$ 10**

- eFLOW
- Tissue Harmonic Echo (THE)
- 4 ultrasound frequencies
- Color Doppler, Power Doppler and Spectral Doppler
- Dual Dynamic Display
- Compatible with ALOKA's extra-corporal probes
- DICOM compatible digital data output



OLYMPUS UNIVERSAL ENDOSCOPIC  
ULTRASOUND CENTER  
**EU-ME1**

- 5 ultrasound frequencies
- Color and Power Doppler in normal and high resolution flow mode
- Compatible with radial ultrasound miniature probes
- One keyboard to control ultrasound and endoscopic functions
- Built-in picture-in-picture function
- Digital data output
- Compact design to integrate into your endoscopy workstation



SINGLE USE ASPIRATION NEEDLE  
**NA-201SX-4021 (21 gauge)**  
**NA-201SX-4022 (22 gauge)**  
Echogenic dimpled needle tip for improved visibility on ultrasound images

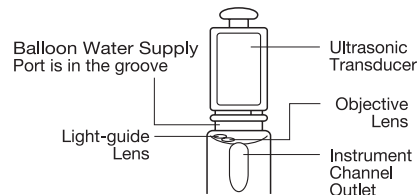
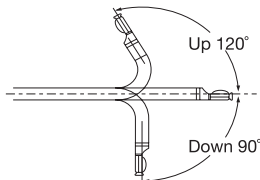
### Features

- Specifically designed for use with OLYMPUS EBUS-TBNA scopes
- 21 gauge and 22 gauge outer diameter options available
- Adjustable needle length
- Pre-sterilized and single-use

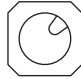
**ViziShot™**



# OLYMPUS BF TYPE UC260FW



## BF-UC260FW Specifications

Model	BF-UC260FW		
Endoscopic Functions	Optical system	Field of view	80 degree
		Direction of view	35 degree forward oblique
		Depth of field	2 to 50 mm
	Insertion tube	Distal end outer diameter	6.9 mm
		Insertion tube outer diameter	6.3 mm
		Working length	600 mm
		Channel inner diameter	2.2 mm
	Instrument channel	Direction from which Endo-Therapy accessories enter and exit the endoscopic image	
	Bending section	Angulation range	Up 120°, Down 90°
	Total length		890 mm

With ALOKA ProSound α10



With OLYMPUS EU-ME1



Ultrasonic Functions	Ultrasonic cable	MAJ-1597 (1500 mm)	
	Display mode	B-mode, M-mode, D-mode, Flow-mode, Powerflow-mode, eFLOW	B-mode, Color and Power Doppler in normal and high resolution Flow-mode
	Scanning method	Electronic curved linear array	
	Scanning direction	Parallel to the insertion direction	
	Frequency	5 / 7.5 / 10 / 12 MHz	5 / 6 / 7.5 / 10 / 12 MHz
	Tissue Harmonic Echo	5.00MP / 5.00MS / 5.00MR / 5.00MH	—
	Scanning range	60 degree	
	Focusing Point	A maximum of 4 focal points are available.	A maximum of 2 focal points are available
	Contacting method	Balloon method, Direct contact method	

## NA-201SX-4021/4022 Specifications

Model	NA-201SX-4021	NA-201SX-4022
Maximum Insertion Portion Diameter	1.9 mm	1.8 mm
Working Length	700 mm	
Needle Width	21 G	22 G
Needle Length	40 mm	



Specifications, design and accessories are subject to change without any notice or obligation on the part of the manufacturer.