

Gastrointestinal Videoscope

## GIF-1200N

A New Ultra-slim Screening Scope with Fine Image Quality



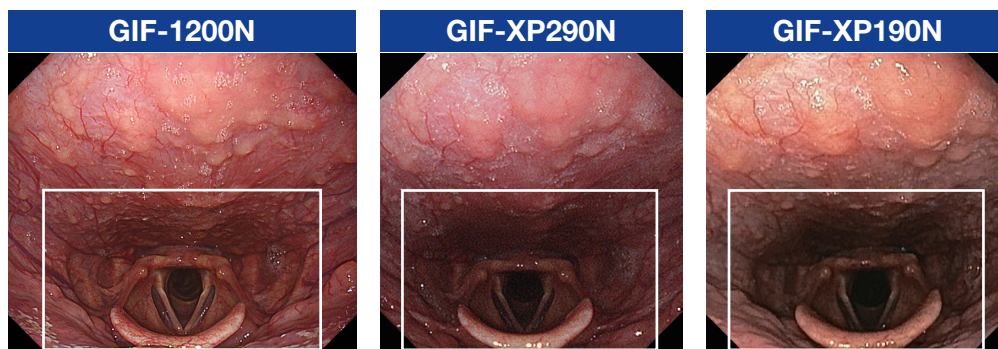
## A New Ultra-slim Screening Scope with Fine Image Quality

### High Image Quality

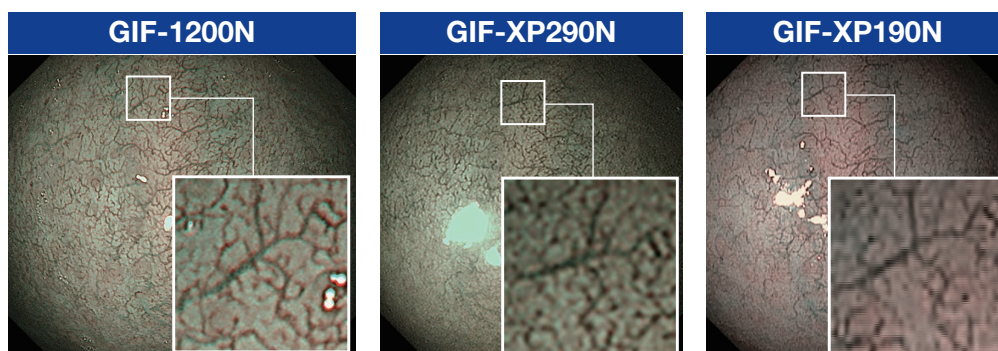
Equipped with a newly developed CMOS image sensor and newly designed optical lenses, the GIF-1200N provides higher resolution across a wider range of observation than our conventional model\*, while maintaining a narrow tip diameter of just 5.4 mm. With its ability to capture the finest details, it is designed to realistically reproduce the surfaces of minute blood vessels and mucous membranes, thereby facilitating accurate diagnosis.

\* When comparing with GIF-XP290N or GIF-XP190N.

### White Light Normal Focus



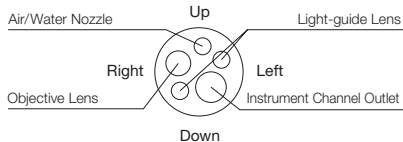

### NBI Near Focus



### Ultra-slim Insertion Tube

To help reduce pain during oral or nasal insertion, the insertion tube has been constructed from a softer material\*, while at the same time maintaining sufficient rigidity for insertion into the duodenum.

\* When comparing with GIF-XP290N or GIF-XP190N.

Specifications		
<b>Optical System</b>	Field of view	140°
	Direction of view	Forward viewing
	Depth of field	3–100
<b>Insertion Section</b>	Distal end outer diameter	5.4 mm
	Distal end enlarged	
<b>Instrument Channel</b>	Insertion tube outer diameter	5.8 mm
	Working length	1100 mm
	Channel inner diameter	2.2 mm
	Minimum visible distance	2.0 mm from the distal end
	Direction from which EndoTherapy accessories enter and exit the endoscopic image	
<b>Bending Section</b>		Angulation range Up 210° / Down 90° / Right 100° / Left 100°
<b>Total Length</b>		1420 mm



GASTROINTESTINAL VIDEOSCOPE OLYMPUS GIF-1200N

Specifications, design and accessories are subject to change without any notice or obligation on the part of the manufacturer.

