

Endoscope Reprocessor

OER-5

Effective Reprocessing with Proven Reliability



Effective Reprocessing with Proven Reliability

OLYMPUS Offers Effective Cleaning and Disinfection with Excellent Operability



Reliability, Speed, Ease of use

Reliability: Proven by OLYMPUS
Designed, developed, and manufactured by Olympus, the endoscope experts, this reprocessor offers reliability.

Speed: Speed and Efficiency
Fast reprocessing time and dual-scope reprocessing capability improves work efficiency with achieving high-level disinfection criteria.

Ease of Use: Excellent Operability
User-friendly design provides easy operation for smooth, stress-free use in daily endoscope usage and routine workflow.

Proven Reliability by OLYMPUS, a World-leading Endoscope Manufacturer

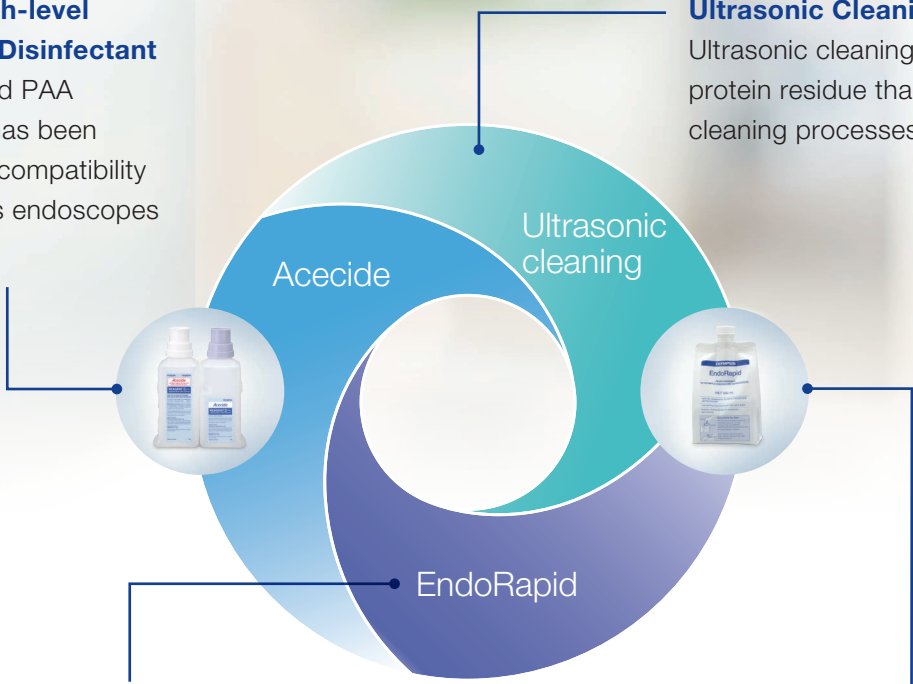
The OER-5 offers reliable reprocessing with proprietary combined solutions. Fast acting PAA delivers high level disinfectant with Acecide, the designated disinfectant solution for OER-5.

Acecide High-level PAA-based Disinfectant

The dedicated PAA disinfectant has been validated for compatibility with Olympus endoscopes by Olympus.

Ultrasonic Cleaning

Ultrasonic cleaning removes more protein residue than non-ultrasonic cleaning processes.



EndoRapid Alkaline Detergent

EndoRapid is an alkaline detergent that rapidly dissolves and removes organic residue at room temperature.

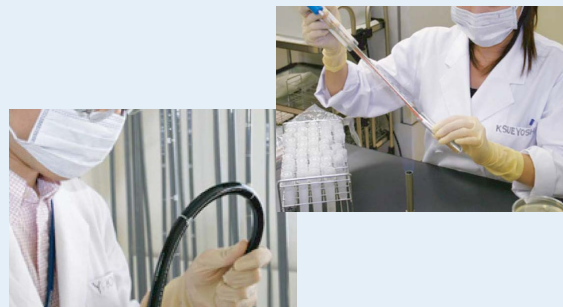
* Olympus-designated detergent is called "EndoQuick" in some areas.

Combination of Ultrasonic and EndoRapid

Test results indicate that the combination of ultrasonic cleaning and EndoRapid effectively removes protein residue.

Endoscopic Manufacturing Expertise and Knowhow Supports Reliable Reprocessing

The OER-5 provides high-level disinfection of Olympus endoscopes and accessories. With years of experience in endoscope manufacturing, Olympus has the unique ability to provide optimal compatibility between the OER-5, validated disinfectants and detergents, and your Olympus endoscopes.



Speed and Efficiency

Fast, Effective Cleaning and Disinfection Performance Optimized for OLYMPUS Endoscopes

Fast Reprocessing Time of Just 17 Minutes

The OER-5 can reprocess two Olympus flexible endoscopes in approximately 17 minutes. Simultaneous dual-scope reprocessing capability improves efficiency and reduces running costs.



High-level Disinfection and Cleaning Performance

In addition to ultrasonic and alkaline detergent cleaning, the OER-5 performs high-level disinfection using the fast-acting PAA-based Acecide disinfectant. Specially created to be compatible with Olympus endoscopes, Acecide makes possible high-level disinfection in about 5 minutes, resulting in a short 17-minute cycle time.



Easy MRC Check

Acecide can be easily collected from a port on the OER-5 basin for fast MRC (Minimum Recommended Concentration) checking. This method saves time and minimizes stress.



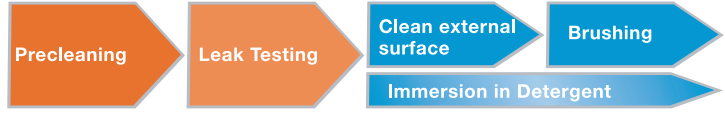
Modified Manual Cleaning

The modified manual cleaning flow allows for easier reprocessing, eliminating over half of the manual cleaning steps, including flushing of the endoscope channels. The OER-5 reduces the amount of work involved with suctioning and flushing and streamlines endoscope reprocessing.

Precleaning and Manual Cleaning



Precleaning and Modified Manual Cleaning

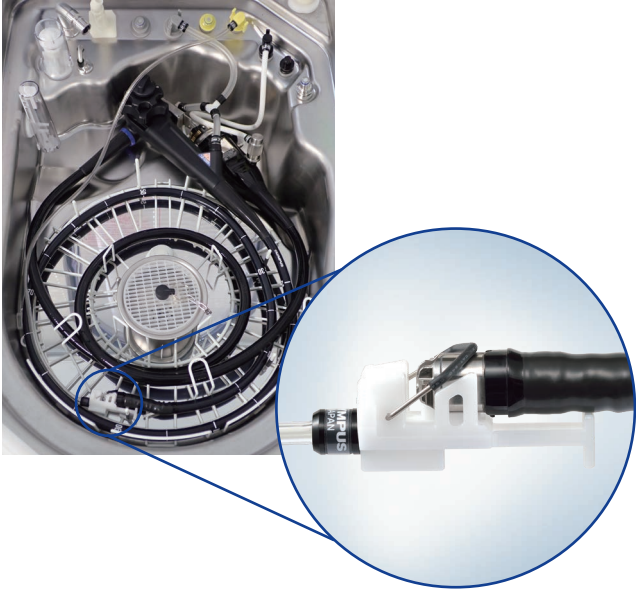


* Consult the Instructions for Use that came with the endoscope to obtain detailed reprocessing instructions.
* Some endoscopes may not be eligible for modified manual cleaning.



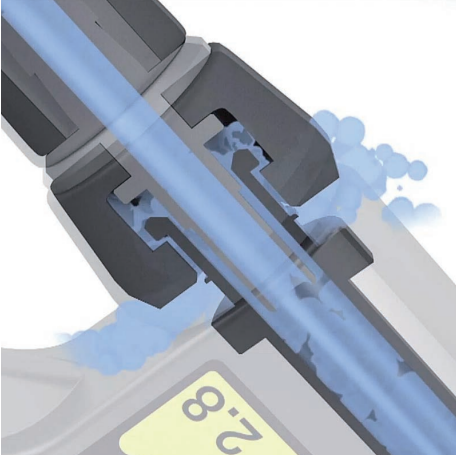
Endoscope with Forceps Elevator

The OER-5 has a dedicated connecting tube for endoscopes equipped with a forceps elevator. The specified MAJ-2358 connecting tube is designed to increase the flushing points and the volume at the distal end of an endoscope with a forceps elevator.



Connector Fluid Overflow System

The Connector Fluid Overflow System helps fluid penetrate the connectors between the tubes and the scope, a feature made possible by the fact that Olympus manufactures both endoscopes and reprocessor.

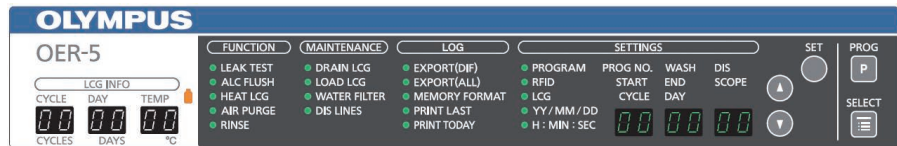


Excellent Operability

User-friendly Design Provides Excellent Operability Developed by Endoscope Manufacturer OLYMPUS

Newly Designed Control Panel

The OER-5's easy-to-view sub-panel makes it easier to see and check the status during operation.



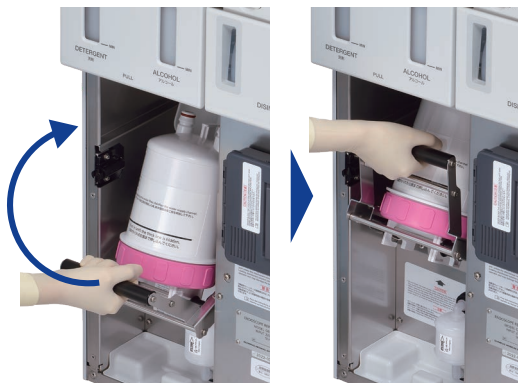
Newly Designed Basin

The OER-5 is designed to help reduce the operator's workload by allowing placement of two endoscopes vertically in the basin.



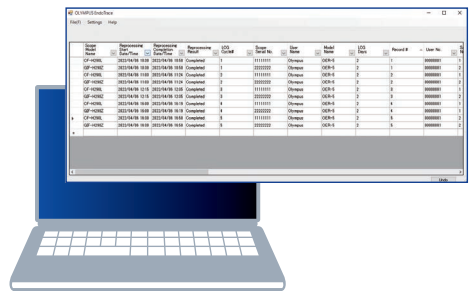
Water Filter with One-touch Replacement Capability

The new water filter (MAJ-2317) can easily be replaced with simple, one-touch operation.



Reprocessing Data Management

Reprocessing data can be stored on a portable memory and transferred to a PC where it can be easily viewed and managed using Olympus' exclusive "EndoTrace" browsing software for the OER-5.



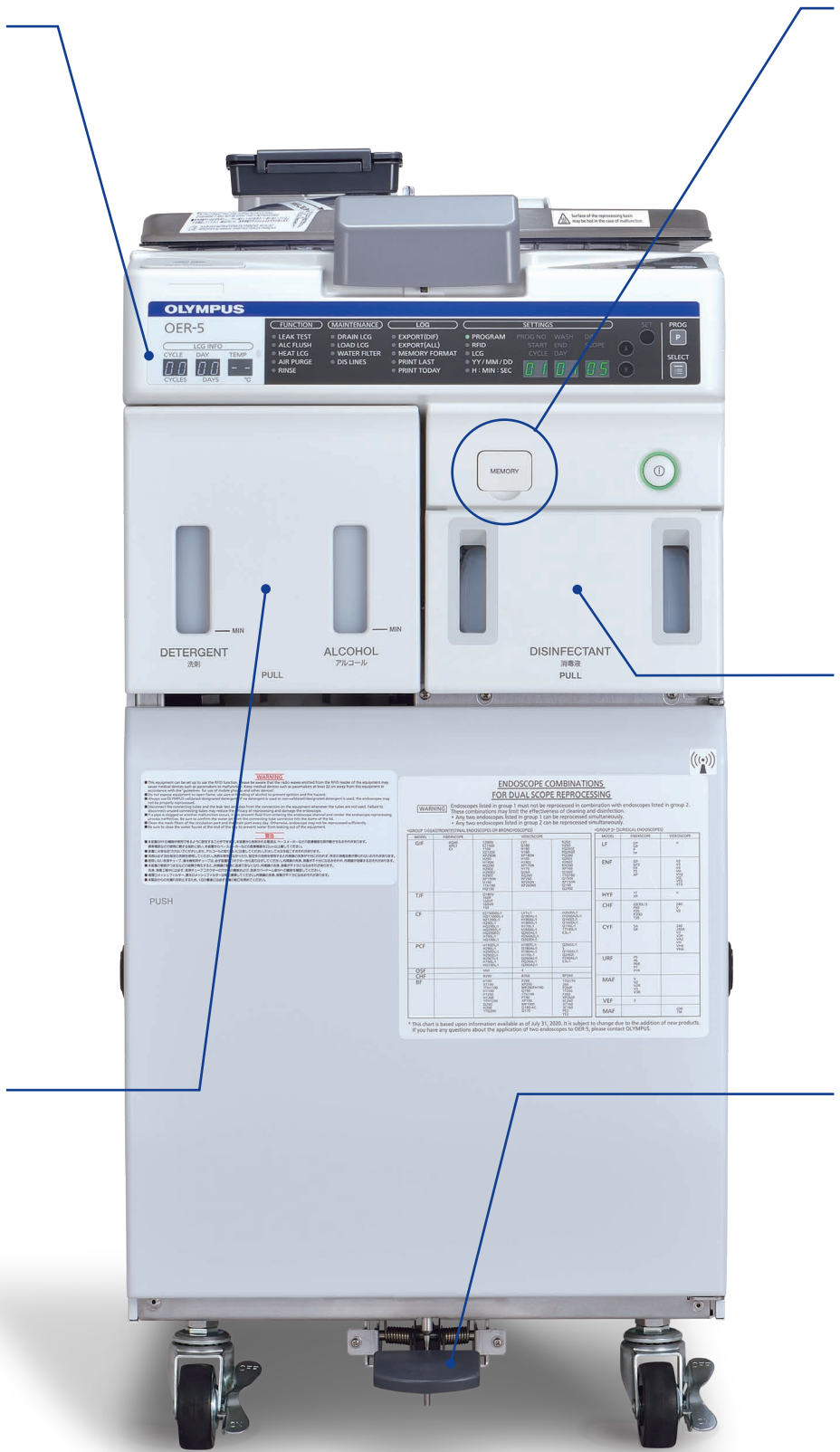
Safe and Hassle-free Chemical Replacement

Replacement is quick and easy. Just insert the Acecide bottles into the drawer of the OER-5. With less manual handling required, Acecide allows operators to minimize exposure to the disinfectant.



Hands-free Basin Lid Operation






The foot pedal can be used to open the lid without touching it. The basin lid stays locked during operation to prevent accidental exposure, spills or splashing.



ENDOSCOPE REPROCESSOR OER-5

Operating Environment			
Ambient Temperature	10 – 40°C (50 – 104°F)	Water Supply Flow	Recommended flow rate 17 L/min. or more (from the water supply/circulation nozzle)
Relative Humidity	30 – 85%	Standard Water Supply Pressure	Between 0.1 – 0.5 MPa (including water hammer)
Atmospheric Pressure	700 – 1060 hPa	Water Supply Temperature	5 – 28°C (41 – 82°F)

Specifications			
Compatible Endoscopes	Olympus endoscopes (Refer to the provided “List of Compatible Endoscopes/Connecting Tubes <OER-5>”) for details.	Disinfectant Solution Discharge Method	1 Discharge through disinfectant collection hose 2 Discharge through drain hose
Number of Reprocessed Endoscopes	2 (1 with certain models)	Reprocessing Basin Capacity	Approx. 14 L
Cleaning Method	Outer surface: Ultrasonic cleaning, fluid flushing cleaning Channel interiors: Fluid flushing cleaning Valves: Ultrasonic cleaning, fluid flushing cleaning	Water Quantity per Process	Quantity of cleaning fluid: Approx. 13 L Water quantity for rinsing after cleaning: Approx. 13 L Water quantity for rinsing after disinfection: Approx. 34 L
Disinfection Method	Outer surface: Immersion in disinfectant solution Channel interiors: Disinfectant solution flushing and flooding Valves: Immersion in disinfectant solution	Disinfectant Solution Tank Capacity	Approx. 17.5 L
Cleaning Time Setting	1 – 10 min. (Setting adjustable in 1 min. intervals)	Disinfectant Solution Used	Olympus-designated disinfectant solution (875 ml cassette bottles)
Disinfection Time Setting	5 minutes, 10 minutes	Detergent Used	Olympus-designated detergent
Disinfectant Solution Heating setting	20°C (68°F) (If the temperature of disinfectant solution is below 20°C, it is heated to 20°C (68°F))	Visual Leakage Detection	Bubble detection during immersion
Disinfectant Solution Heating method	Built-in heater in the reprocessing basin 1 Heating immediately before the disinfection process in a reprocessing program 2 Heating before the start of a reprocessing program	Alcohol Flushing	Automatic flushing/draining using a pump and compressor
Water Discharge Method	Forced draining using a pump (Floor draining)	Dimensions	450 (W) x 955 (H) x 788 (D) mm
		Weight	120 kg (dry condition)
		Power Supply	Voltage: 110,120,220,230,240 V AC Frequency: 50/60 Hz Rated input: 700VA Voltage fluctuation: Within ±10% Frequency fluctuation: Within ±1 Hz

Consumables				
				
Acecide 875ml High-level Disinfectant Peracetic acid based liquid chemical germicide designated for OER-5.	EndoRapid Alkaline Detergent Formulated specifically for use with Olympus endoscope reprocessors.	Acecide Test Strips Test strip for Acecide	Gas Filter: MAJ-822 Eliminates the odor of the disinfectant solution. Air Filter: MAJ-823 Filters the supply air. Water Filter: MAJ-2317 Removes microorganisms and fine particles in the water.	Connector Hanger: MAJ-865 The connector hanger holds the connector portion of the endoscope and can be mounted on either side.

Trademarks, product names, logos, or trade names used in this document are generally registered trademarks or trademarks of each company. Specifications, design and accessories are subject to change without any notice or obligation on the part of the manufacturer.

OLYMPUS

OLYMPUS MEDICAL SYSTEMS CORP.
2951 Ishikawa-cho, Hachioji-shi, Tokyo 192-8507, Japan
www.olympus-global.com

Global Professional Education website
www.olympusprofed.com

