

OLYMPUS

Your Vision, Our Future

OLYMPUS CLL-V1

LED LIGHT SOURCE

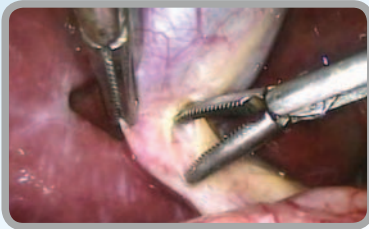
Powerful Illumination with Advanced LED Technology



LED LIGHT SOURCE

Advanced LED Technology for Low-Cost Office and OR Market

The OLYMPUS CLL-V1 light source builds upon Olympus vast experience and expertise in endoscopy and related illumination systems. It incorporates the latest LED technology and enables a bright and noise-free examination with very low energy consumption. In particular, the combination of higher brightness and lower operating costs make this device an optimum solution in the low-cost office and OR market.



An Excellent Choice for Endoscopic Examinations



Powerful Illumination

- Higher brightness compared to conventional halogen light sources.
- Homogeneous light distribution due to optimized lens design for a wide range of telescopes.
- Constant light intensity over lifetime.

Efficient and eco-friendly

- Low maintenance costs: No bulb changes required for at least 2,000 hours of operation.
- Low lifetime costs due to the low energy consumption (55 W) of the environmentally friendly LED technology.

LED Light Source CLL-V1

Technical Specifications

Delivery includes	Light source, 4 foot holders, 2 spare fuses
Power supply	Voltage 100 to 240 V Frequency 50/60 Hz Power consumption ... 55 VA Fuse T 3.15 A 250 V
Dimensions	Size (H x W x D) 111 mm 295 mm 404 mm Weight 6.3 ± 0.2 kg
Safety	Ingress protection rate IPX0
Illumination	Lamp LED Operating hours 2,000 hours
Operation environment	Temperature 10 to 40 °C Relative humidity 30 to 85 % Atmospheric pressure 700 to 1060 hPa

Order Information

Article number	Description	
WA97020A	Olympus CLL-V1	
WA95621A	Power cable, type E/F (CEE7/7)	
WA95622A	Power cable, type B (NEMA 5-15)	
WA95623A	Power cable, type G (BS 1363)	