

OLYMPUS®

Your Vision, Our Future

VISERA PRO

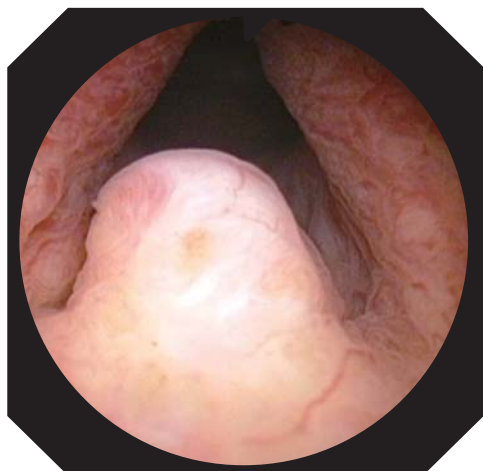
HD CAMERA HEAD

High Definition At Your Fingertips



Vivid Visualization

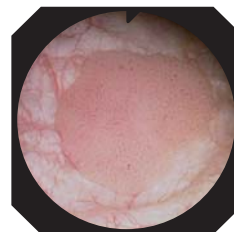
HDTV1080i*



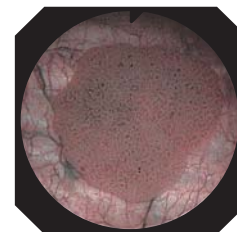
HDTV1080i image

With 1080 effective scanning lines of picture information, HDTV1080i dramatically expands the range of clinical possibilities. The high pixel density of HDTV1080i images ensures that they are smooth and clear, with reproduction so accurate that details and colors remain sharp and true-to-life.

Narrow Band Imaging*

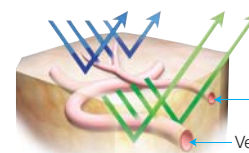


Conventional image



NBI image

NBI is an optical image enhancement technology that enhances the visibility of vessels and other tissue on the mucosal surface. Narrowband illumination, which is strongly absorbed by hemoglobin and penetrates only the surface of tissues, is ideal for enhancing the contrast between the two. As a result, under narrowband illumination, capillaries on the mucosal surface are displayed in brown on the monitor, and veins in the submucosa are displayed in cyan.



*Available only with VISERA Pro.

Capillaries on mucosal surface
Veins in submucosa

Comfortable Control



Extremely Light-Weight Body

Olympus has developed an exclusive, very light-weight, new L-shaped HD camera head. The compact design makes the scope more maneuverable, reducing stress and fatigue even during long procedures.

Remote Control Switches

Convenient remote control allows up to three functions — such as electronic zoom, NBI, shutter, or others — to be custom programmed to provide added control. Additionally, the control switches are remote from the camera, helping to reduce the camera shake when you operate a function.

HD CAMERA HEAD OTV-S7ProH-HD-L08E



Specifications

Size	Camera Head	ø21 x 83 mm
	Cable	ø3.3 mm x 4 m
Weight		60 g (head part) 20 g (remote control part)
Observation	Pickup System	Interline type CCD solid-state image pickup
Classification	Degree of protection against electric shock	Type BF.
(electro-magnetic equipment)	Degree of protection against explosion	The product should be kept away from flammable gases.
Cleaning / disinfection,	Cleaning / disinfection	Immersible in disinfectant solution
sterilization	Sterilization	Ethylene oxide gas sterilization possible

Ancillary Equipment



VISERA Pro
Video System



Specifications, design and accessories are subject to change without any notice or obligation on the part of the manufacturer.



OLYMPUS MEDICAL SYSTEMS CORP.
Shinjuku Monolith, 2-3-1 Nishi-Shinjuku, Shinjuku-ku, Tokyo 163-0914, Japan

For a complete listing of
sales and distribution locations visit:
www.olympus.com