



## VIDEO SYSTEM OTV-SI

Video Endoscopy - See the New Standard



# Two-in-One

## Video System & Light Source Integration



VIDEO SYSTEM

### OTV-SI

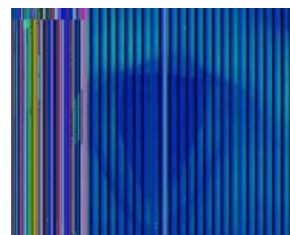
#### Space-Saving Design

The integrated light source and video processor make the OTV-SI the imaging platform of choice for clinics of all sizes.



#### Unprecedented Image Quality

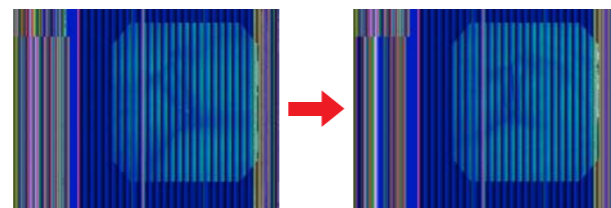
To meet the needs for higher quality imaging in ENT office examinations, we offer the OTV-SI Office Video Endoscopy System that delivers the same true color, high-resolution video imaging.



ENF-VQ Image

#### Contour Enhancement

Contour enhancement defines contours in the image for clear observation.



Normal Image

Contour Enhanced Image

#### Multipurpose Interface for Fiber/Rigid Endoscopes

By connecting a camera head\*, you can use your existing fiber/rigid endoscopes.



\*Camera heads are optional.

# Exceptional Imaging

## Only a Videoscope Can Offer

All Olympus ENT videoscopes offer outstanding image quality and digital enhancement.

RHINO-LARYNGO VIDEOSCOPE

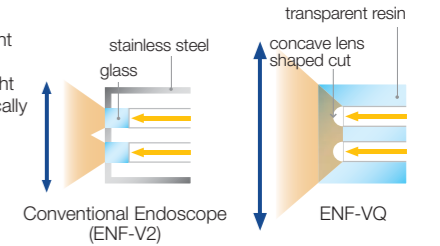
### ENF-VQ (for diagnosis)

#### High-Resolution Images

Featuring an all-new CCD that delivers high-resolution images, the ENF-VQ may help detect minute details that would not have been previously detected.

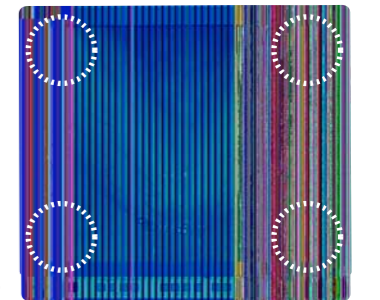
#### New Tip Design

By integrating transparent resin with concave lens shaped cut in front of light guide, we have dramatically expanded the light distribution range.



#### Full-Screen Images : Clear and Bright In Every Corner

Full-screen images make observation much easier. Thanks to a new tip design, the ENF-VQ provides full-screen images that are clear and bright even in the corners.



ENF-VQ full-screen image

RHINO-LARYNGO VIDEOSCOPE

### ENF-V2 (for diagnosis)

#### Ultra-Slim 3.2 mm Diameter

The ENF-V2 not only delivers some of the brightest, clearest images available from a videoscope, it boasts a revolutionary 3.2 mm ultra-slim diameter. Even thinner than conventional routine fiberscopes, this slim design helps to facilitate insertion while enabling clear observation.



RHINO-LARYNGO VIDEOSCOPE

### ENF-VT2 (for treatment)

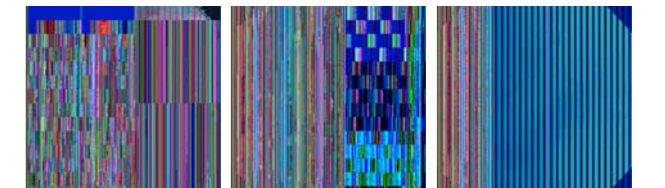
#### One Scope Enables Both Observation with Clearer Views and Effective Treatment

- Suction mechanism lets you keep a clear view with easy push-button switching.
- Twenty different types of accessories are available, giving you a wide range of instruments to choose from.
- Compatible with both laser/electrosurgery treatments.

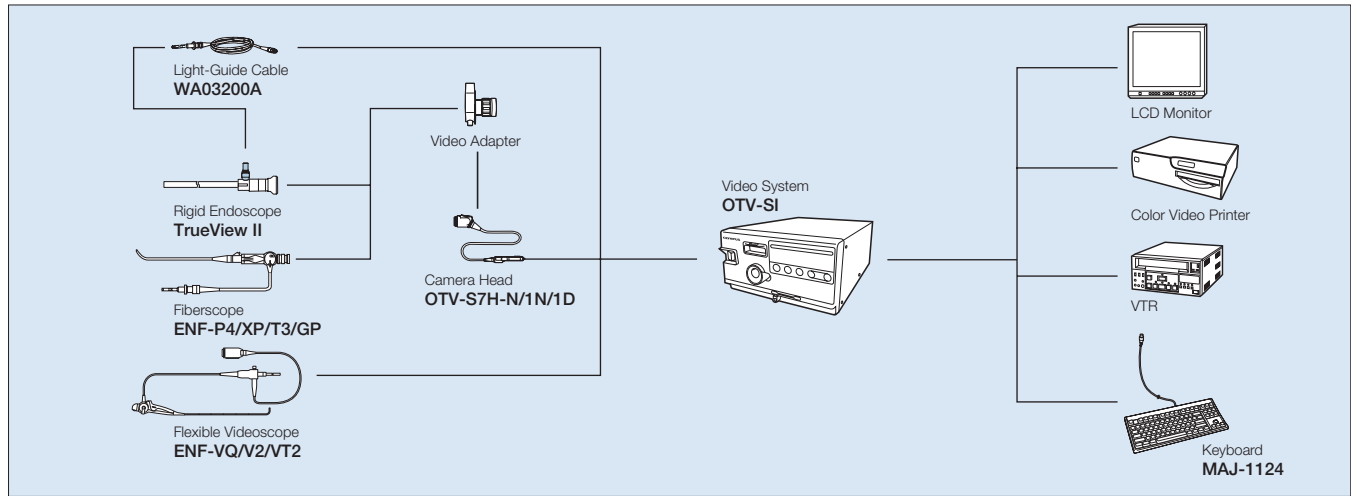


#### 2.0 mm Close Focus Capability

Close focus allows the endoscope tip to come as close as 2.0 mm without electronic magnification, enabling you to observe small details in the mucosa.



## System Chart



## Specifications Video System OTV-SI

Power Supply	Voltage	100 - 120 / 220 - 240 V AC
	Voltage Fluctuation	Within 10%
	Frequency	50/60 Hz
	Frequency Fluctuation	Within ±1 Hz
	Electric Current Consumption	1.2 A
	Fuse Rating	4 A, 250 V
	Fuse Size	6.35 x 31.8 mm
Size	Dimensions	295(W) x 171(H) x 434(D) mm
	Weight	12 kg

Illumination	Switching of Lamp	Manual
	Lamp	150 W halogen lamp (MD-151)
	Lamp Life	Approx. 40 hours of continuous use. When used intermittently, the lamp life may vary slightly.
	Ignition	Switching Regulator
	Light Output Adjustment	Light-path diaphragm control
	Cooling	Forced-air cooling

## Flexible Videoscope

		ENF TYPE VQ	ENF TYPE V2	ENF TYPE VT2
Optical System	Field of View	90°	90°	90°
	Depth of Field	5 - 50 mm	5 - 50 mm	2 - 40 mm
Insertion Tube	Distal End Outer Diameter	3.9 mm	3.2 mm	4.8 mm
	Flexible Tube Outer Diameter	3.6 mm	3.4 mm	4.9 mm
	Working Length	300 mm	300 mm	365 mm
Bending Section	Angulation Range	Up/Down 130°	Up/Down 130°	Up/Down 130°
	Total Length	528 mm	528 mm	635 mm
Channel Inner Diameter		-	-	2.0 mm

Note: Product lineup may differ in some countries.



ENF-VQ



ENF-V2



ENF-VT2

## Options

### Instruments

Disposable Biopsy Forceps				Syringe Needle	Washing Pipe
FB-211D	FB-221D	FB-231D	FB-241D	NM-8L-1	PW-6C-1

### Reusable Biopsy Forceps

FB-15C-1	FB-19C-1	FB-21C-1	FB-52C-1	FB-34C-1	FB-19CR-1

### Grasping Forceps

FG-14P-1	FG-20P-1	FG-38SX-1	FG-53SX-1

### Electrosurgical Accessories

CD-6C-1	FD-7C-1	SD-18C-1	SD-7C-1

## Camera Head

**OTV-S7H-N**  
**OTV-S7H-1N**  
(w/ built-in moiré filter)  
**OTV-S7H-1D**  
(w/ built-in moiré filter)



## Specifications

Camera Head	Dimensions	27 x 37 mm (from mount surface)
	Weight	40 g (excluding cable)
Cable	5.2 mm x 4 m	
Cleaning/Disinfection	Immersible in disinfectant solution with a video adapter attached.	
Sterilization	Ethylene oxide gas sterilization possible.	

•Number of remote control switches: 2

## Video Adapter

**AR-T10E(1.0X)** **AR-T10Q(1.0X)**  
**AR-T12E(1.2X)** **AR-T12Q(1.2X)**



Specifications, design and accessories are subject to change without any notice or obligation on the part of the manufacturer.

**OLYMPUS**<sup>®</sup>

OLYMPUS MEDICAL SYSTEMS CORP.  
 Shinjuku Monolith, 2-3-1 Nishi-Shinjuku, Shinjuku-ku, Tokyo 163-0914, Japan

For a complete listing of sales and distribution locations visit [www.olympus.com](http://www.olympus.com)