

OLYMPUS[®]

Your Vision, Our Future

OES URETERO-RENO FIBERSCOPE

URF-P5



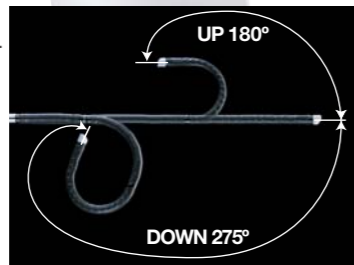
BREAKTHROUGH TECHNOLOGY ADVANCES EVERY ASPECT OF THE ENDOUROLOGIC PROCESS

From insertion to maintenance, Olympus incorporates its latest proprietary technology in the development of the URF-P5 Flexible Ureteroscope where significant benefits are realized when performing uretero-rensoscopy.

Access

Flexible angulation facilitates orientation inside the kidney.

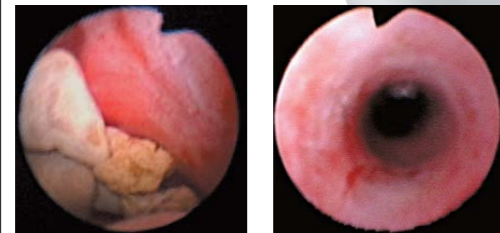
- The 275° down angulation enables optimal visualization in the lower calyx.
- The 180° up angulation (with a small radius) is most appropriate for accessing the upper/middle calyces.
- The scope is designed to maintain excellent tip deflection even when small-caliber laser fiber is inserted.



Visualization

Image quality has been significantly improved.

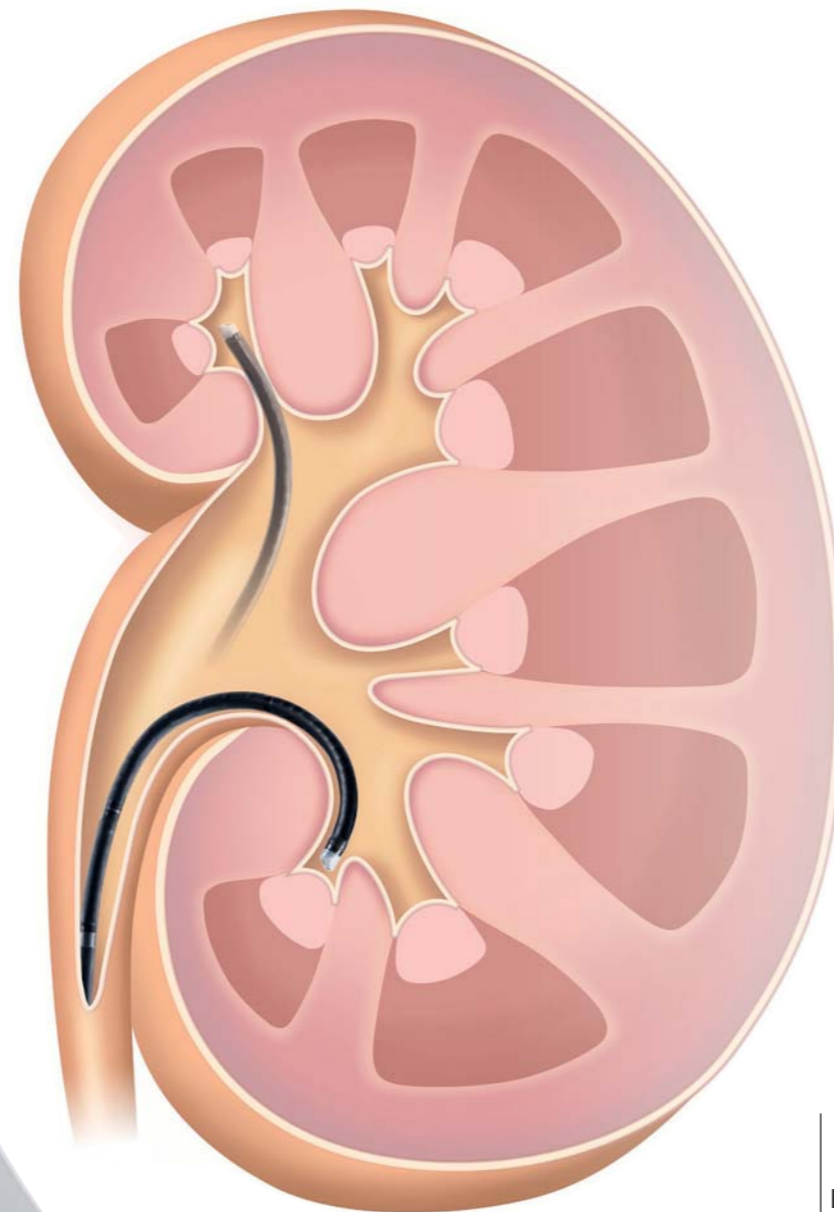
By incorporating a moiré-reduction filter into the URF-P5 scope, Olympus has succeeded in further enhancing its opto-digital imaging performance. The moiré-reduction effect provides the user with an extremely clear picture.



Control

One hand operation, improved torque control, detachable LG

- While angulating the scope with one hand, you can simultaneously operate a forceps or open/close the irrigation port with the other hand.
- A special new material has been designed into the outer sheath making tip rotation more responsive when twisting the control section.
- Detachable light guide (LG) capability allows the user to switch the light guide back and forth between the cystoscope/semi-rigid ureteroscope and the URF-P5.



Maintenance

Remarkable durability & leakage testing.

- A special new material used in the outer sheath minimizes crushing.
- Thicker rubber in the bending section resists potential puncturing.
- Leakage testing allows punctures to be detected early and helps to ensure a longer service life for the scope.



Insertion

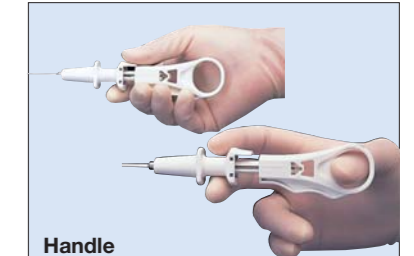
Evolutiontip with slim 5.3 Fr diameter.

The Evolutiontip is an innovative adaptation in scope tip design that can be aligned with the angulation direction, making insertion much smoother while maintaining optimal image quality and treatment capabilities. Because of the slim 5.3 Fr tip diameter, insertability is significantly enhanced.



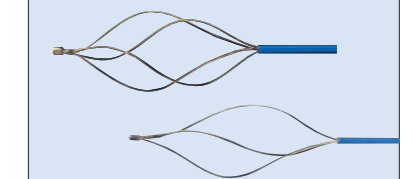
Evolutiontip

Accessories



Handle

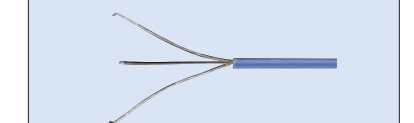
Newly designed for greater comfort and efficiency. Can be used with two styles of grip.



FG-51D/52D/55D (Length:1150 mm) Disposable Grasping Forceps (Basket Type)

Features a basket with large openings. Designed to not be crushed in narrow canals.

*FG-51D/55D: 3 Fr, 4 wires; FG-52D: 2.4 Fr, 3 wires



FG-54D (3 Fr, Length:1150 mm) Disposable Grasping Forceps (Three Nail Type)

Specially designed for the difficult task of removing small calculi from the pelvis renalis.



FB-56D-1(3 Fr, Length:1150 mm) Biopsy Forceps

Autoclavable forceps that can be inserted into a 3 Fr (1.2 mm) channel.



MD-82

Guide Wire

0.035 inch diameter and flexibility on both sides provides smoother insertion.



ST-U1

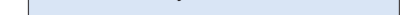
Urinary Duct Sheath Dilator

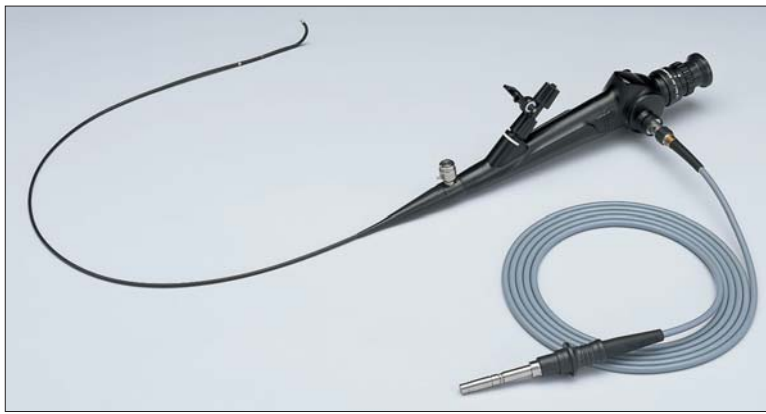
Its slim design (11.7 Fr) lets it fit easily on the URF-P5. Also, up to 0.035 inch guide wire can be used for smoother insertion.



WA05991A

Instrument Tray





Specifications

Optical System	Field of View	90°
	Direction of View	Forward Viewing
	Depth of Field	2 - 50 mm
Insertion Tube	Distal End Outer Diameter	5.3 Fr (bullet shape)
	Insertion Tube Outer Diameter	8.4 Fr (2.8 mm)
	Working Length	700 mm
Instrument Channel	Inner Channel Diameter	3.6 Fr (1.2 mm)
Bending Section	Angulation Range	Up 180°/Down 275°
Total Length		1050 mm

Standard Set

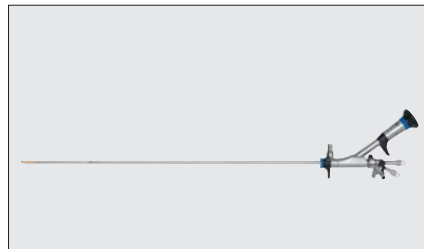
OES Uretero-Reno Fiberscope URF TYPE P5	1	MH-507 Channel-Opening Cleaning Brush	1
MAJ-579 Biopsy Valve	10	BW-15SH Channel Cleaning Brush	1
MAJ-891 Forceps/Irrigation Plug	1	BW-7B Channel Cleaning Brush	1
MB-156 ETO Cap	1		

Endourology Products



ENDO-EYE Ureteroscope

With an advanced CCD built into the distal end, this innovative video scope will astonish you with its superb, true-to-life image quality. The light guide cable and remote control switches are integrated within the body of the scope.



OES Pro Ureteroscope

The compact 50,000-image-fiber bundle provides excellent visualization. Larger, brighter, more consistently high-quality images enable detailed observation and effective treatment. Expansive irrigation capability increases efficiency. Uniquely designed insertion portion and revised tip profile provides atraumatic insertion. Autoclavable.



OES Pro Percutaneous Nephroscope

This new percutaneous nephroscope offers unsurpassed image quality. Produces excellent flow capability, ensuring the clearest field of view possible and allowing you to concentrate on your procedures. A variety of forceps are available. Ergonomically designed. Autoclavable.



CYF TYPE V2/VA2/V2R VISERA CYSTO-NEPHRO VIDEOSCOPE

The flexible video cystoscope incorporates a high-resolution, multicolor CCD chip at the distal end of the scope that produces a large, bright, and consistent image. The Evolutiontip design enhances insertability without compromising image quality and treatment capability. A suction function is also available with the CYF-VA2.



CYF-5/5A OES CYSTO NEPHRO FIBERSCOPE

Compatible with electrosurgical procedures. One-handed control of the aspiration function makes it easy to keep the field of view clear. The large 2.4 mm (7.2 Fr) channel allows perfusion with 6 Fr instruments. Evolutiontip design.



LUS-2 Ultrasonic Lithotripter

Highly effective stone fragmentation and suction using ultrasonic power. Integrated generator and pump (two-in-one system) improves both procedural and cost efficiency.

Specifications, design and accessories are subject to change without any notice or obligation on the part of the manufacturer.

OLYMPUS[®]

OLYMPUS MEDICAL SYSTEMS CORP.
Shinjuku Monolith, 2-3-1 Nishi-Shinjuku, Shinjuku-ku, Tokyo 163-0914, Japan

For a complete listing of sales and distribution locations visit:
www.olympus.com