

OLYMPUS[®]

Your Vision, Our Future

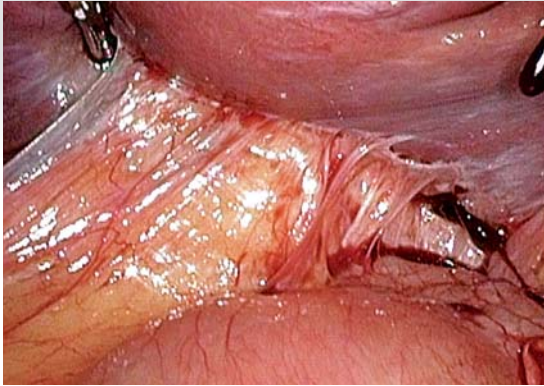
EVIS EXERA II

HD AUTOCLAVABLE CAMERA HEAD

High Definition for Surgical Precision



High Definition Imaging Provides More Accurate Views.



With 1080 effective scanning lines of picture information, the high definition television camera head delivers picture quality that is more than twice as good as conventional TV. Images are smooth and clear, with reproduction so accurate that details and colors remain sharp and life-like, opening the way to a new era in endoscopy.

* The camera heads are compatible only with EXERA II.

Autoclavability

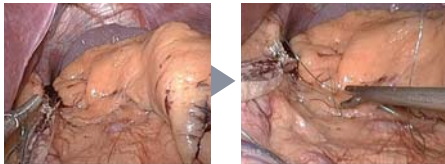


The camera head is tightly sealed preventing lens fogging even after autoclave steam sterilization reprocessing.



One Touch Zoom

Enlarge an image to 1.2x, 1.5x.



Normal

1.5x

Lineup



OTV-S7ProH-HD-12E



OTV-S7ProH-HD-12Q

HD AUTOCLAVABLE CAMERA HEAD

OTV-S7ProH-HD-10E
1.0x, Eye-piece type

OTV-S7ProH-HD-10Q
1.0x, Quick-lock type

OTV-S7ProH-HD-12E
1.2x, Eye-piece type

OTV-S7ProH-HD-12Q
1.2x, Quick-lock type

Specifications

Size	Camera head	OTV-S7ProH-HD-10E/12E: ø41 x 105 mm (from mount surface)
	Cable	OTV-S7ProH-HD-10Q/12Q: ø35 x 124 mm (from mount surface)
Weight	Camera head	ø6.8 mm x 4 m
		OTV-S7ProH-HD-10E/12E: 215 g (excluding cable)
		OTV-S7ProH-HD-10Q/12Q: 215 g (excluding cable)
Observation	Pickup system	Interline type CCD solid-state image pickup
Classification (electro-magnetic equipment)	Degree of protection against electric shock	Type CF
	Degree of protection against explosion	The product should be kept away from flammable gases.
Cleaning/disinfection/sterilization	Cleaning/disinfection	Immersible in disinfectant solution
	Sterilization	Ethylene oxide gas sterilization and steam (autoclavable) sterilization possible

•Number of remote control switches: 3

Specifications, design and accessories are subject to change without any notice or obligation on the part of the manufacturer.

OLYMPUS[®]

OLYMPUS MEDICAL SYSTEMS CORP.
Shinjuku Monolith, 2-3-1 Nishi-Shinjuku, Shinjuku-ku, Tokyo 163-0914, Japan

For a complete listing of
sales and distribution locations visit
www.olympus.com



Narrow Band Imaging

NBI is an optical image enhancement technology that enhances the visibility of vessels and other tissues on the mucosal surface. Narrowband illumination, which is strongly absorbed by hemoglobin and penetrates only the surface of tissues, is ideal for enhancing the contrast between the two. As a result, under



narrowband illumination, capillaries on the mucosal surface are displayed in brown and veins in submucosa are displayed in cyan on the monitor.

Remote Control of Frequently Used Functions



On the camera head control section, three switches are built in, allowing programming of frequently used functions such as electronic zoom and image capture for convenient remote control.