

OLYMPUS®

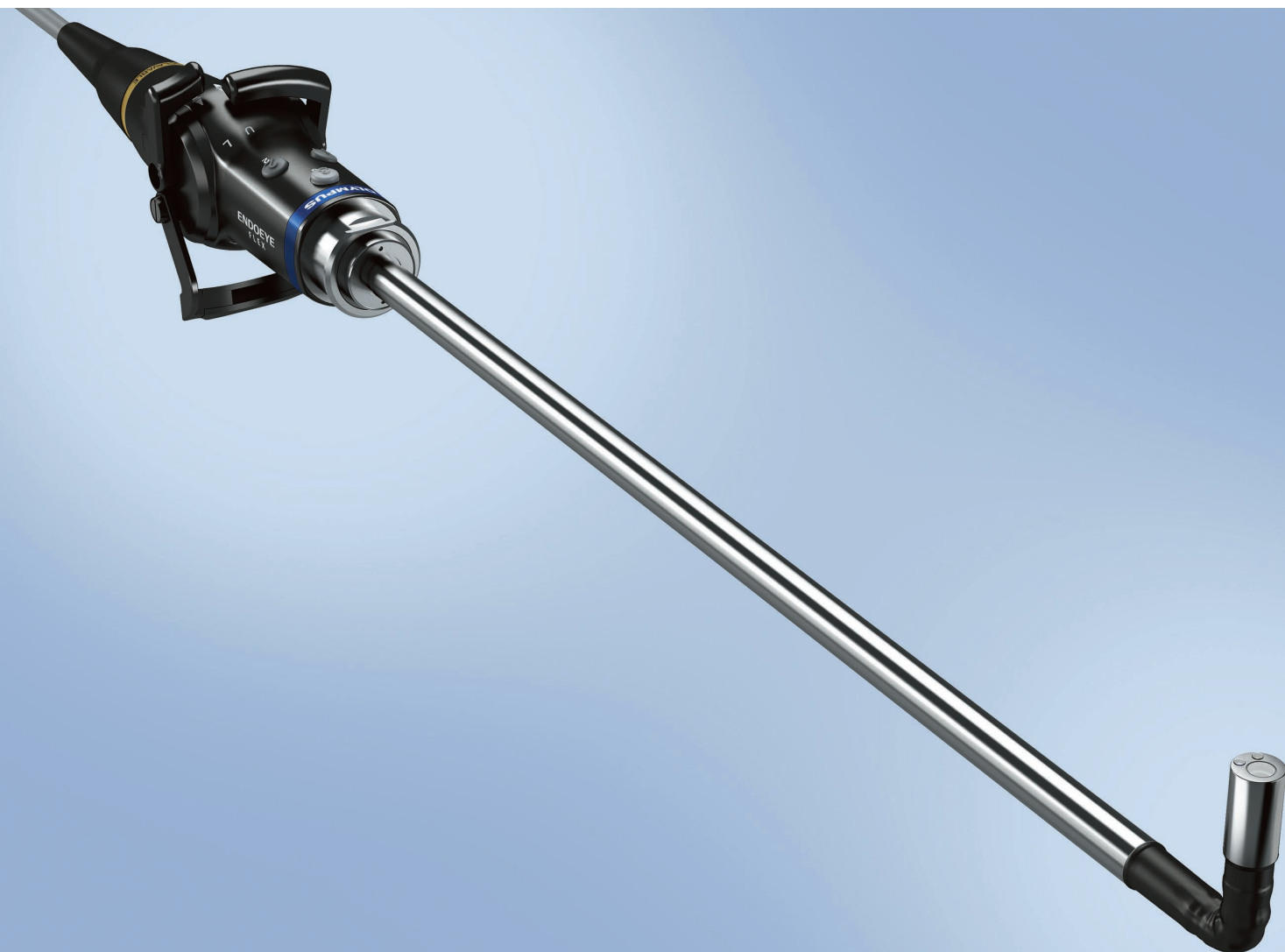
Your Vision, Our Future

**ENDOEYE
FLEX**

ENDOEYE FLEX DEFLECTABLE VIDEOSCOPE

LTF-S190-10

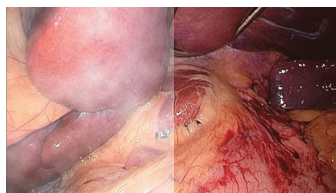
10 mm HDTV deflectable videoscope with integrated Fog Free Function



Main Features

Fog Free Function

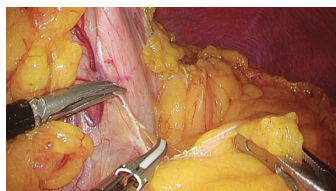
The unique heating function on the tip of the scope prevents the endoscopic view from fogging. Instead of wiping or heating up the scope during a procedure, this feature maintains a fog-free view from start to finish.



*Simulated image

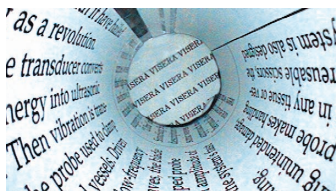
Multi CCD

The advanced chip on the tip enables the ENDOEYE FLEX to provide bright, clear images. This scope has multiple CCDs and delivers unparalleled high-resolution, finely reproduced color HDTV images, and displays in 16:9.



Focus Free

Advanced optical design provides greater depth of field eliminating manual focusing.



NBI (Narrow Band Imaging)

NBI is a proprietary optical image enhancement technology that is only available on OLYMPUS products. NBI enhances the visualization of vessels and other tissues on the mucosal surface and is 20% brighter compared to previous models.

Angulation (100 degrees)

The ENDOEYE FLEX can bend up to 100 degrees in all directions. This means the relevant organs and tissues can be thoroughly examined head-on, from above and from behind.



Streamlined Setup

The integrated all-in-one design of the ENDOEYE FLEX scope enables easy setup.

Autoclavability

All OLYMPUS surgical scopes are autoclavable. After the procedure, there is no need to sort the scopes — just put them in the autoclave tray and sterilize.



Specifications

Optical System	Field of view	100°
	Direction of view	Forward viewing
	Depth of field	18–100 mm
Insertion Section	Distal end outer diameter	10 mm
	Rigid section outer diameter	10 mm
	Working length	370 mm
Bending Section	Angulation range	Up 100°, Down 100° Right 100°, Left 100°
	Total Length	3600 mm
Weight	Actual weight when in use	420 g
Cleaning/ Disinfection/ Sterilization	Cleaning/disinfection	Immersible in disinfectant solution.
	Sterilization	Autoclave/ETO

Accessories



Specifications, design and accessories are subject to change without any notice or obligation on the part of the manufacturer.