

## Distal Attachment

A full lineup to support the wide variety of needs in endoscopic mucosal resection.



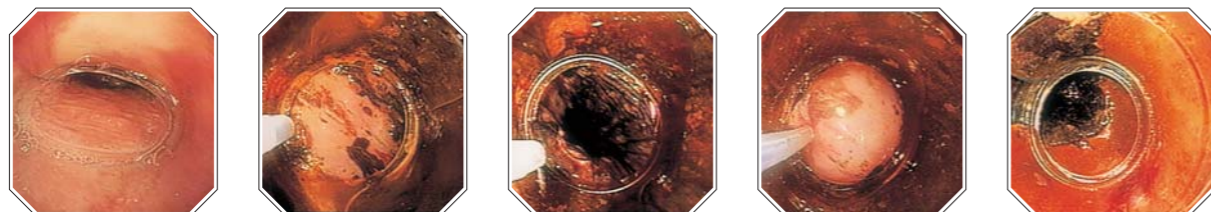
Wide product range to support both observation and treatment depending on the purposes.



**EMRC Procedure**

**(Endoscopic Mucosal Resection with transparent plastic Cap-fitted endoscope)**

1. Use a dye catheter to spray dye on the area where lesions are suspected.
2. Mount the distal attachment to the distal end of the endoscope and secure it with medical elastic tape. When using a wide-opening oblique distal attachment with a rim, align the notch marking with the endoscope channel.
3. Advance the tip of the distal end and bring it into contact with the target area.
4. Using an injection needle, inject the target area with saline solution for elevating the lesion.
5. Insert the snare through the instrument channel of the endoscope, and pre-loop it along the rim of the distal attachment.
6. Using the suction function of the endoscope, draw the lesion into the distal attachment.
7. Snare and ligate the aspirated mucosa.
8. Cease aspiration and use remote viewing to confirm the size of the area for resection.
9. Activate the electro-surgical snare and excise the lesion.
10. Withdraw the snare and draw the resected tissue into the distal attachment using either the suction of the endoscope or retrieval forceps. Withdrawal of the endoscope and retrieval of resected tissue may then be effected simultaneously.
11. Spray dye again on the area where the lesion had been resected in order to confirm that no lesions remain.



To better meet the diverse requirements of Endoscopy, our latest line of distal attachments now includes large-capacity, soft-type models in addition to conventional straight and oblique models with and without rims.

**For observation assistance**

The Distal Attachment ensures an optimal visual field by maintaining the distance between endoscope tip and the target area.

**Straight**

**For MH-462, 463, 464, 465, 466, 483, MAJ-663**

Standard use.



**Oblique**

**For MH-587, 588, 589, 590, 591, 592, MAJ-664**

Due to the oblique shaped tip, insertion is greatly improved and observation can be done with only a small amount of air flow.



**For endoscopic treatment**

The Distal Attachment with rim allows easier positioning of diathermy snares to aid Endoscopic Mucosal Resection. Alternatively, when used in conjunction with the HX-21L-1 Ligating Device, ligation of esophageal varices is possible.

**Straight with rim**

**For MH-593, 594, 595, 596, 597, 598, MAJ-665**

Straight type Distal Attachment with circumferential rim at the tip. Esophageal varices ligation can be performed when used in conjunction with the Ligating Device (HX-21L-1).



**Oblique with rim**

**For MAJ-289, 290, 291, 292, 293, 294, 666**

Oblique shaped Distal Attachment with circumferential rim at the tip is especially effective for mucosal resection of the esophagus, enabling larger resection of the mucosa. The notch marking at the tip allows easier positioning of the endoscope tip.



**Wide opening oblique with rim**

**For MAJ-295, 296, 297**

With conventional designs, it may be difficult to excise a large surface area mucosa when using a small diameter endoscope. However, by widening the diameter of the Distal Attachment, it is possible to resect a larger area of mucosa even when using a small diameter endoscope. The rim has a notch marking, which facilitates positioning of the distal tip.



**Wide opening oblique with rim, soft-type**

**For D-206-01, 02, 03, 04, 05, 06**

Large-capacity, large-diameter design enables a larger area of mucosa to be captured, thereby facilitating resection of bigger lesions. At the same time, smaller lesions, including healthy mucosal borders can be resected as well. The transparent elastic resin used in these attachments can change its shape during the insertion into a patient.



# DISTAL ATTACHMENT

## Specifications

### ■ Hard Type

Model		Maximum diameter	Model	Maximum diameter	Model	Maximum diameter	Model	Maximum diameter	Compatible endoscopes
Straight	Oblique	Straight /Oblique	Straight with rim		Oblique with rim		Wide opening oblique with rim		
MH-462	MH-587	12.6 mm	MH-593	12.9 mm	MAJ-289	12.8 mm	MAJ-295	16.1 mm	GIF-PQ20,XQ200,XQ230,XQ240,SP240,Q150,Q150X,160,Q165,Q180,XQ260,P140
MH-463	MH-588	13.5 mm	MH-594	13.9 mm	MAJ-290	13.8 mm	MAJ-296	16.1 mm	GIF-XQ20,XQ30,XQ40,XV10,PV10,100,130,140,Q240,V,XQ140,H260,Q260,E3,Q160,Q240X,260J,H180,H180J,PCF-P240A,CF-Q145
MH-464	MH-589	14.8 mm	MH-595	14.9 mm	MAJ-291	14.8 mm	MAJ-297	16.1 mm	GIF-Q20,Q30,Q40,1T20,1T30,V10,Q140,Q200,Q230,1T130,1T140,1T240 SIF-10 PCF-10,,20,100,130,140,200,230,240,Q260A,Q180A,Q150A
MH-465	MH-590	16.6 mm	MH-596	16.6 mm	MAJ-292	16.6 mm	—	—	GIF-D10,1T10,2T10,2T20,V10Z,1TV10,1T100 CF-P10,P20,V
MH-466	MH-591	17.2 mm	MH-597	17.2 mm	MAJ-293	17.2 mm	—	—	GIF-2T100,2T200,XTQ160 CF-30,40,100T,130,140,230,Q140,Q240,V,Q160,Q160A,Q165,Q165A,Q240A,Q180A,H180A,E3,Q150,140I,140L,1T140,H260A,H260AZ,Q160D
MH-483	MH-592	19.0 mm	MH-598	19.2 mm	MAJ-294	19.1 mm	—	—	CF-20,V10,1TV10,100,200,1T100,1T20,1T200,2T200,200Z
MAJ-663	MAJ-664	15.8 mm	MAJ-665	15.8 mm	MAJ-666	15.8 mm	—	—	GIF-2T240,2TQ260M CF-240,Q260A,240D,Q260D, PCF-E3,OSF-4

5 units/pack

### ■ Soft Type

Model	Maximum outer diameter	Compatible endoscopes
D-206-01	18.1mm	GIF-160
D-206-02	18.1mm	GIF-XQ200,XQ240,XQ260,Q165,Q180,Q150,Q150X,Q260
D-206-03	18.1mm	GIF-V,V70,100,130,XQ140,XQ30,XQ40,XQ230,Q240X,Q260,E3
D-206-04	18.1mm	GIF-V2,G110,140,Q160,Q240,H180
D-206-05	18.1mm	GIF-Q140,Q200,Q230,Q30,Q40,1T130,1T140,1T240,H260,H260Z,Q260J

5 units/pack

Specifications, design and accessories are subject to change without any notice or obligation on the part of the manufacturer.



OLYMPUS MEDICAL SYSTEMS CORP.  
Shinjuku Monolith, 2-3-1 Nishi-Shinjuku, Shinjuku-ku, Tokyo 163-0914, Japan

For a complete listing of  
sales and distribution locations visit:  
[www.olympus.com](http://www.olympus.com)