

ULTRASONIC PROBE

UM-BS20-26R

Newly Developed Balloon-type Ultrasonic Probe.
Compatible with Regular 2.8 mm Channel Endoscope.

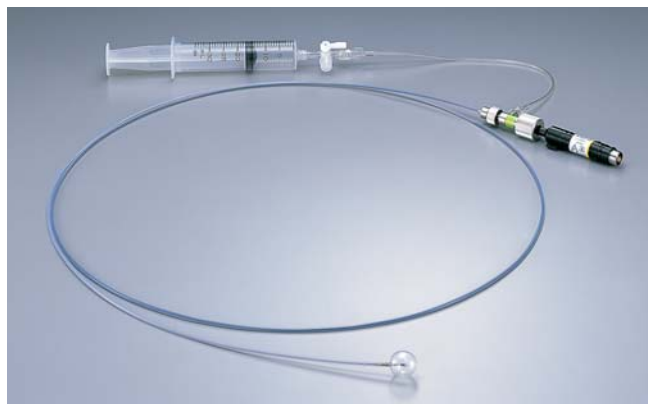


UM-BS20-26R

Now you can perform Balloon Method ultrasound examinations with this ultrasonic probe.

The newly developed UM-BS20-26R has a maximum diameter of 2.6 mm with a balloon sheath and can easily fit through any endoscope with a channel diameter of 2.8 mm or more. Designed specifically to perform Balloon Method ultrasound examinations for the observation of regions where it is difficult to maintain de-aerated water, such as the esophagus or large intestine.

- Fits through any 2.8 mm diameter channel gastroscope.
- Allows you to perform Balloon Method ultrasound examinations during routine endoscopic procedures.
- 20 MHz frequency offers detailed, high resolution ultrasonography.
- Contains 5 balloon sheaths as a standard set.

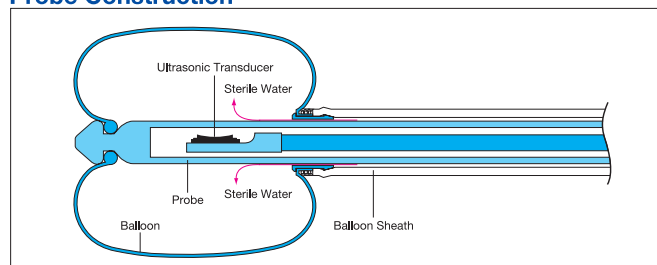


※ Note: An extension tube, three-way stopcock and syringe are required when the ultrasonic probe is used.

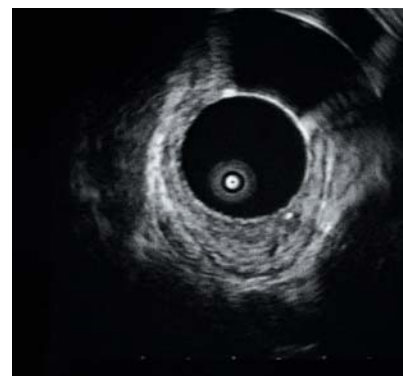
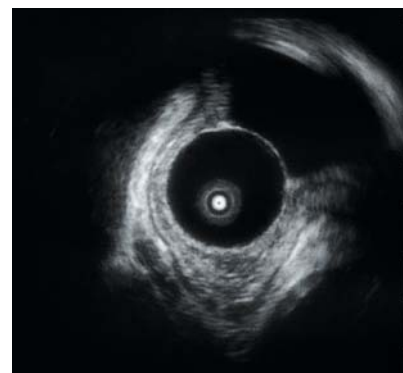
Specifications

Display Mode	B-mode
Scanning Method	Mechanical, Radial scanning
Scanning Direction	Perpendicular to the direction of insertion, 360° scanning
Frequency	20 MHz
Contact Method	Balloon Method
Working Length	2050 mm
Total Length	2140 mm
Balloon Sheath Outer Diameter	2.5 mm
Balloon Sheath Max. Outer Diameter	2.6 mm
Channel Inner Diameter (Endoscope)	2.8 mm or over

Probe Construction



※ Caution: This product contains natural rubber latex which may cause allergic reactions.



Specifications, design and accessories are subject to change without any notice or obligation on the part of the manufacturer.

OLYMPUS[®]

OLYMPUS MEDICAL SYSTEMS CORP.
Shinjuku Monolith, 2-3-1 Nishi-Shinjuku, Shinjuku-ku, Tokyo 163-0914, Japan

For a complete listing of
sales and distribution locations visit:
www.olympus.com