

**OLYMPUS**<sup>®</sup>

Your Vision, Our Future

**EVIS LUCERA  
ELITE**

EVIS LUCERA ELITE GASTROINTESTINAL VIDEOSCOPE

**GIF-H290**

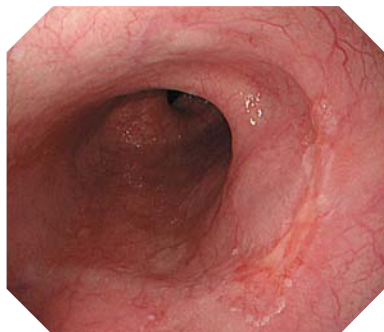
Significantly slimmer design with amazing HDTV clarity



## Main Features

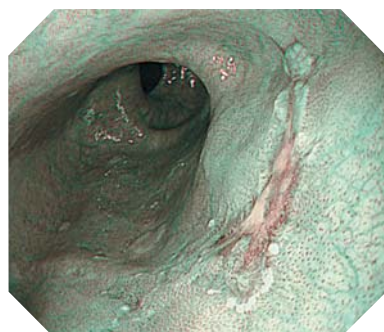
### HDTV Image Quality

HDTV image quality delivers high-definition observation capabilities, even in a new, slimmer scope design.



### NBI (Narrow Band Imaging)

NBI in EVIS LUCERA ELITE provides twice the viewable distance of EVIS LUCERA SPECTRUM. The greatly improved performance of NBI opens up exciting new clinical applications and reinforces NBI's position as the standard of care for GI endoscopy.



### Slim Design

This scope offers an excellent balance of size and performance, with HDTV image quality in a slim 8.9 mm diameter size.

### Small Bending Section

Shorter bending distance of the bending section allows the scope to approach and observe the esophagus and the gastric angulus more easily.

### Waterproof One-touch Connector

A new connector design minimizes the effort required for setup prior to and in between cases. In addition, it is fully submersible and eliminates the need for a water-resistant cap and the associated risk of an expensive repair due to accidental immersion.



## Specifications

Optical System	Field of view	140°
	Direction of view	Forward viewing
	Depth of field	3-100 mm
Insertion Section	Distal end outer diameter	8.9 mm
	Distal end enlarged	
	Insertion tube outer diameter	8.9 mm
	Working length	1030 mm

Instrument Channel	Channel inner diameter	2.8 mm	
	Minimum visible distance	3.0 mm from the distal end	
Bending Section	Direction from which endotherapy accessories enter and exit the endoscopic image		
		Up	210°
		Down	90°
		Right	100°
Total Length	Left	100°	
	Total Length	1350 mm	
Compatible EVIS LUCERA System	Video System Center OLYMPUS CV-290 Xenon Light Source OLYMPUS CLV-290SL, CLV-290		

Specifications, design and accessories are subject to change without any notice or obligation on the part of the manufacturer.