

OLYMPUS®

Your Vision, Our Future

EVIS LUCERA ELITE

EVIS LUCERA ELITE GASTROINTESTINAL VIDEOSCOPE

GIF-H290Z

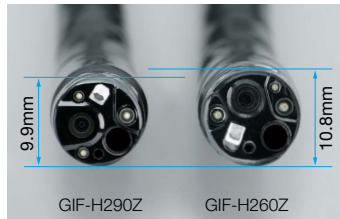
Slim scope and improved operability with optical magnification



Main Features

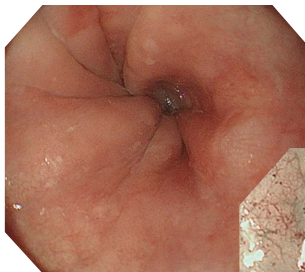
Slim Optical Magnification Scope

While adopting an optical magnification function, the GIF-H290Z achieves 9.9-mm distal end outer diameter, which is 0.9 mm slimmer than the previous GIF-H260Z*¹ scope. This helps to support smoother insertion.

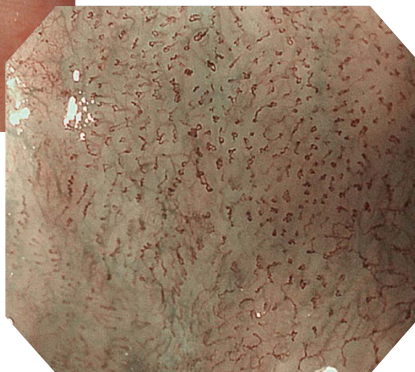


Optical 85x Magnification

This scope magnifies images by 85x*², with its HDTV image quality delivering close views of the mucosal surface easily. In combination with the brighter NBI (Narrow Band Imaging), mucosal tissue and capillary networks are enhanced, further supporting detailed observation.



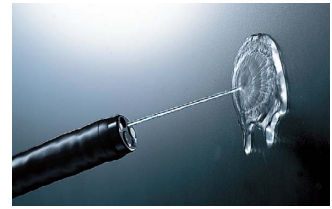
White Light



Optical 85x magnification with NBI

Water Jet

A forward water jet helps to keep the mucosa clear during observation and treatment in the upper GI tract.

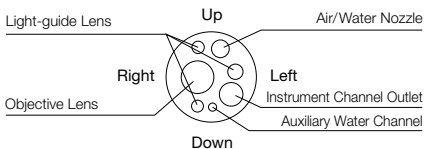


Waterproof One-touch Connector

The connector design minimizes the effort required for setup prior to and in between cases. In addition, it is fully submersible and eliminates the need for a water-resistant cap and the associated risk of an expensive repair due to accidental immersion.

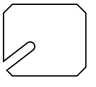



Specifications

Optical System	Field of view	Wide: 140°/Tele: 95°
	Direction of view	Forward viewing
	Depth of field	Wide: 7 to 100 mm/ Tele: 1.5 to 3 mm
Insertion Section	Distal end outer diameter	9.9 mm
	Distal end enlarged	
	Insertion tube outer diameter	9.6 mm
	Working length	1030 mm

*¹ EVIS LUCERA GASTROINTESTINAL VIDEOSCOPE OLYMPUS GIF TYPE H260Z

*² When using HIGH DEFINITION LCD MONITOR OEV262H

Instrument Channel	Channel inner diameter	2.8 mm
	Minimum visible distance	3.0 mm from the distal end
Water Jet Channel	Direction from which endotherapy accessories enter and exit the endoscopic image	
	Direction from which the water jet enter in the endoscopic image	
Bending Section	Angulation range	Up 210°/Down 90°/ Right 100°/Left 100°
Total Length	1350 mm	
Compatible System	EVIS LUCERA ELITE VIDEO SYSTEM CENTER OLYMPUS CV-290 EVIS LUCERA ELITE XENON LIGHT SOURCE OLYMPUS CLV-290SL, CLV-290	

Specifications, design and accessories are subject to change without any notice or obligation on the part of the manufacturer.